




### ■ EZ 350 HQ - 1/3" weatherproof colour camera, high resolution

#### Specifications

Sensor: 1/3" SONY CCD  
 Picture element: 752 (H) x 582 (V)  
 Horizontal resolution: 520 TV lines  
 Sensitivity: 0,5 lux / F = 1.2  
 Video output: 1 Vp-p composite PAL, BNC  
 S/N ratio: over 48 dB  
 Gamma correction: > 0,45  
 White balance: automatic  
 Back light compensation: on / off  
 AGC: on / off  
 Synchronisation: internal or line-lock with V-setup (24 V AC)  
 Electronic shutter: on / off, 1:50 ~ 1:100.000  
 Flickerless function: on / off  
 Lens:  
 EZ 350 HQ V1: DC varifocal lens 3,8 ~ 9,5 mm (IR-corrected)  
 EZ 350 HQ V2: DC varifocal lens 9 ~ 22 mm

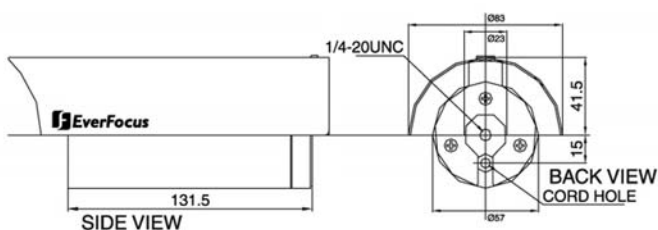
Heater: 12 W thermostat controlled  
 Heater activating temperature: +10°C  
 Weatherproof rating: IP 66  
 Power source: 12 V DC / 24 V AC  
 Power consumption: 5 W max., 12 W with activated heater

Ambient temperature: -35°C ~ +50°C (at 12 V DC)  
 -40°C ~ +50°C (at 24 V AC)

#### Dimensions:

83 (W) x 70 (H) x 172 (D) mm (with sunshield),  
 57 (W) x 57 (H) x 132 (D) mm (without sunshield)

Bracket: zink diecasted, silver colour, included  
 Weight: 1,1 kg



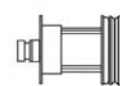
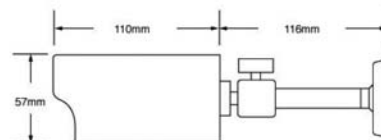
### ■ EZ 200 N - 1/3" weatherproof colour camera, standard resolution

#### Specifications

Sensor: 1/3" SONY CCD  
 Picture element: 500 x 582 (PAL)  
 Horizontal resolution: 340 TV lines  
 Sensitivity: 0,3 lux / F = 1.2  
 S/N ratio: over 48 dB  
 Video output: 1 Vp-p composite PAL  
 Gamma correction: >0,45  
 Synchronisation: internal  
 Back light compensation: yes  
 Auto white balance: yes  
 AGC: yes  
 Electronic shutter: 1:50 ~ 1:100.000  
 Lens: f=4,3 mm\*  
 Lens mount: M12 x P 0,5  
 Weatherproof rating: IP 66

Power source: 12 V DC +/- 10%, 200 mA

Ambient temperature: -10°C ~ +50°C  
 Dimensions: 57 (D) x 110 (L) mm  
 Bracket: zink diecasted, silver colour, included  
 Weight: 385 g



\* Further lenses see table page 24